

Polibotánica

ISSN electrónico: 2395-9525

polibotanica@gmail.com

Instituto Politécnico Nacional

México

<http://www.polibotanica.mx>

HYDROCHORY IN *Astrophytum coahuilense*: EXPERIMENT TO IDENTIFY SEMINAL STRUCTURES THAT PROVIDE ITS BUOYANCY

HIDROCORIA EN *Astrophytum coahuilense*: EXPERIMENTO PARA IDENTIFICAR LAS ESTRUCTURAS SEMINALES QUE LE PROPORCIONAN SU FLOTABILIDAD

Romero-Méndez, U.; J.L. Becerra-López, C. García-De la Peña, J.J. Martínez-Ríos, A. Czaja, G. Muro, y J. Sánchez.

HYDROCHORY IN *Astrophytum coahuilense*: EXPERIMENT TO IDENTIFY SEMINAL STRUCTURES THAT PROVIDE ITS BUOYANCY.

HIDROCORIA EN *Astrophytum coahuilense*: EXPERIMENTO PARA IDENTIFICAR LAS ESTRUCTURAS SEMINALES QUE LE PROPORCIONAN SU FLOTABILIDAD.

HYDROCHORY IN *Astrophytum coahuilense*: EXPERIMENT TO IDENTIFY SEMINAL STRUCTURES THAT PROVIDE ITS BUOYANCY

HIDROCORIA EN *Astrophytum coahuilense*: EXPERIMENTO PARA IDENTIFICAR LAS ESTRUCTURAS SEMINALES QUE LE PROPORCIONAN SU FLOTABILIDAD

U. Romero-Méndez

*Facultad de Ciencias Biológicas. Universidad Juárez del Estado de Durango.
Av. Universidad s/n, Frac. Filadelfia, C.P. 35010. Gómez Palacio, Dgo.*

J.L. Becerra-López

*Instituto de Ciencias Básicas e Ingeniería, Laboratorio de Ecología de Poblaciones,
Universidad Autónoma del Estado de Hidalgo. Carretera Pachuca-Tulancingo, Km.
4.5, Ciudad del Conocimiento, Colonia Carboneras,
42184 Mineral de la Reforma, Hidalgo, México.*

C. García-De la Peña

*Facultad de Ciencias Biológicas. Universidad Juárez del Estado de Durango.
Av. Universidad s/n, Frac. Filadelfia, C.P. 35010. Gómez Palacio, Dgo.*

J.J. Martínez-Ríos

*Facultad de Agricultura y Zootecnia de la Universidad Juárez del Estado de Durango.
División de Estudios de Posgrado. Ejido Venecia, Durango, México.*

A. Czaja

G. Muro

J. Sánchez/ j.sanchez@ujed.mx

*Facultad de Ciencias Biológicas. Universidad Juárez del Estado de Durango.
Av. Universidad s/n, Frac. Filadelfia, C.P. 35010. Gómez Palacio, Dgo.*

Romero-Méndez, U.;
J.L. Becerra-López,
C. García-De la Peña,
J.J. Martínez-Ríos, A. Czaja,
G. Muro, y J. Sánchez.

HYDROCHORY IN
Astrophytum coahuilense:
EXPERIMENT TO
IDENTIFY SEMINAL
STRUCTURES THAT
PROVIDE ITS BUOYANCY.

HIDROCORIA EN
Astrophytum coahuilense:
EXPERIMENTO PARA
IDENTIFICAR LAS
ESTRUCTURAS
SEMINALES QUE LE
PROPORCIONAN SU
FLOTABILIDAD.

POLIBOTÁNICA

Instituto Politécnico Nacional

Núm. 46: 123-131. Julio 2018

DOI:
10.18387/polibotanica.46.8

ABSTRACT: Hidrocoras seeds usually have some type of structures for dispersion in water. The structures may have less density than water, low specific weight, chambers of air, spongy tissue and small cotyledons with spongy tissue. This study evaluated the ability of buoyancy of *Astrophytum coahuilense* seeds and the structures that give this feature. The density of water and seed density values were compared to demonstrate the tendency to float. A group of five full seeds, five chambers empty structures and five structures of Chamber of the embryo with five replicates, respectively, were put to the test, by placing them in distilled water for 24 hours, by quantifying the seeds and structures that remained afloat. The empty chamber and full seed showed greater buoyancy compared to the embryo chamber, suggesting that the empty chamber provides to the seed a lower density with respect to the water, giving it the ability to float.

Key words: seed, empty chamber, embryo chamber, density, floatability.

RESUMEN: Las semillas hidrocoras generalmente poseen algún tipo de estructuras para la dispersión en agua. Las estructuras pueden presentar menos densidad que el agua, peso específico bajo, cámaras de aire, tejido esponjoso y cotiledones pequeños con tejido esponjoso. En el presente trabajo se evaluó la capacidad de flotabilidad de las semillas de *Astrophytum coahuilense* y las estructuras que le confieren esta característica. Los valores de la densidad del agua y la densidad de la semilla se

contrastaron para demostrar la tendencia a flotar. Un grupo de cinco semillas completas, cinco estructuras de cámaras vacías y cinco estructuras de cámara del embrión con cinco repeticiones, respectivamente, fueron puestos a prueba, colocándolas en agua destilada durante 24 horas, cuantificando las semillas y estructuras que se mantuvieron a flote. La cámara vacía y la semilla completa mostraron mayor capacidad de flotabilidad respecto a las cámaras de los embriones, sugiriendo que la cámara vacía le proporciona a la semilla una menor densidad respecto a la del agua, proporcionándole la capacidad de flotar.

Palabras clave: semilla, cámara vacía, cámara del embrión, densidad, flotabilidad.

INTRODUCTION

The knowledge from the morphology of seeds allows the identification of different structures developed for geographic dispersion (Niembro, 1988). It has been documented that the individuals which allocate a greater energy investment into structures that maximize seed dispersal will be positively selected (Augspurger and Hogan 1983) and suitable for establishment (Sánchez-Salas et al. 2013).

One strategy of seed dispersion which is known as hydrochory, meaning that the dispersion of seeds occurs through water (Sánchez-Salas et al. 2012 y 2014). This process is endorsed by the presence of structures that have a low specific weight, due to the presence of slots filled with air, spongy tissue or special corky tissue (Moreno 2009; Hendry and Grime 1993). Structural characteristics, such as a large hilum (as is displayed in *Astrophytum coahuilense* seeds) plays an important role in the dispersion of seeds by means of water action (Bregman 1988).

In this way, is mention that there are seven main types of seed shapes that have been described for the subfamily Cactoideae, drawn from their structures and shape: *Cereus*-Type, *Rhipsalis*-Type, *Arequipa*-Type, *Notocactus*-Type, *Thrixanthocereus*-Type, *Astrophytum*-Type and *Blossfeldia*-Type, all of which have evolved from a *Pereskioid*-Type ancestor with a suborbicular-lenticular seed shape. *Astrophytum*-Type seeds are navicular and adapted especially for hydrochory, but can also be soared by wind (anemochory) which denotes an evolutionarily advanced form.

Astrophytum coahuilense (considered a different species to *A. myriostigma* según Vazquez-Lobo et al. 2015) is an endemic cactus species native to Mexico and it is currently in vulnerable (VU) category according to the IUCN (2011), mainly due to systematic extraction and habitat destruction in areas where it grows naturally. Various studies propose that the seed of this species is hydrochorous and that it is dispersed by means of water currents (Bregman 1988; Barthlott and Hunt 2000; Sánchez-Salas et al. 2012, 2013, 2014), which has probably provided a wide range of dispersion to the species along the northern Mexican Chihuahuan desert, considering that in the past (Pleistocene-Holocene) there were abundant paleo-lakes and paleo-rivers in the north of Mexico (Van Devender y Burgess, 1977, 1985; y Marín y Torres-Ruata, 1990; Metcalfe 2006; Czaja et al., 2014). However, there has not been any analysis carried out to show that the structure of the seed together with its density, as adaptations of its empty chambers and spongy tissue, confer buoyancy and to answer the question: why floats the seed of *A. coahuilense*? In this study, the buoyancy of the seed of this species was analyzed to identify the structures that confer the ability to float. The mass and volume of the whole seeds were calculated with the assumption that the seed density is less than that of water. This work is intended to contribute to future explication the of *A. coahuilense* distribution pattern with reference to the other five species of the genus.

METHODS

During September of 2007, 40 individuals of *A. coahuilense* were georeferenced from "Las Palmas" locality at El Sarnoso, Gómez Palacio, Durango. 10 individuals were randomly selected, with the aim of disrupting at least the seed bank of this population, which has been highly impacted by anthropogenic activities. Two fallen fruits were collected from each selected individual, whereas only near the ground fruits, which were deposited in paper bag, taking into account the specifications from Gold et al. (2004) for its collection. Of 3000 seeds, 50 seeds were random selected of the fallen fruits collected and stored in paper bags (Arredondo-Gómez and Camacho-Morfin, 1995) during one week approximately. In order to identify the structures that confer the buoyancy of the *A. coahuilense* seed, a transversal (freehand) gash using a cutter was performed to 25 randomly selected seeds. This treatment favored the separation of the large or empty chamber from the embryo chamber (Becerra-López et al. 2010). We work with five structures like experimental unit and four repetitions (five repetitions in total by structures). Both chambers were divided into subgroups of five and placed in polyethylene vessels containing 30 ml of distilled water (five glasses per chamber type). Five subgroups of five complete seeds were also used. The vessels were shaken for 10 seconds every two hours for 24 hours (temperature 18°-25°C) to simulate the movement of water currents, because the natural current of region of La Comarca Lagunera its turbulents. Although, Van Den Broek et al. (2005) proved that the movement of water in buoyancy tests is not significant. At the end of this period seeds and structures that remained afloat and those sunk for each vessel were counted and thus we could able an error rate for each experimental unit. In order to identify associations between the type of structure and buoyancy a chi-square test was performed in a contingency table (2x3). The non-parametric Kruskal-Wallis variance analysis determined floated seed differences by type of structure employing a Post hoc test (ranks test) and difference between groups were identified. The statistical analyzes were executed in the program MedCalc® Version 12.5.0.0, 1993-2013. Statistical tests were assumed to be significant when $P \leq 0.05$.

To determine the density of the seed, a sample of 50 randomly selected seeds mass and volume were calculated using a pycnometer and an analytical balance (ADVENTURE) with accurateness of 0.0001 g, and then the density of the seed was calculated. In order to calculate mass, volume and density of the seeds, Querelle y Cia Ltda (2015) procedure was used, where the density of a body (g/cm^3) is given by:

$$\rho = \frac{m}{V} \quad (1)$$

Where: ρ = density; m = mass and V = volume

For which the following measures were calculated:

a) Weight of the seeds (P_c), b) Weight of the pycnometer filled with water (P_p) and c) Weight of the pycnometer containing submerged seeds (P_t).

To calculate the mass of each component (P_c , P_p , P_t), values were divided by the gravity force $\approx 9.8 \text{ m s}^{-2}$, to obtain their mass values, where:

m_c = mass of the seeds, m_p = mass of the pycnometer with water, m_t = mass of the pycnometer containing the submerged seeds.

The Archimedes principle says that all body immersed in a fluid experiences a vertical and upwards thrust equal to the weight of fluid buoyed which is called buoyancy (Mohazzabi, 2017). So all body with a density less than water, floats (sufficient that the density of the body is less than the density of water so the body float).

Then by the principle of Archimedes we must:

$$m_t = m_p - \rho_{H_2O}V_c + m_c \quad (1)$$

Where: m_t = mass of the pycnometer containing the submerged seeds.
 m_p = mass of the pycnometer with water
 ρ_{H_2O} = is the water density $\approx 1 \text{ g/cm}^3$
 V_c = is the volume of the seeds
 m_c = mass of the seeds

Taking into account that:

$$(2) \quad m_c = \rho_c V_c$$

Where ρ_c is the density of the seeds, we can substitute it in (2) and write:

$$(3) \quad \rho_c = \rho_{H_2O} m_c / V_c$$

RESULTS

It was observed that the seed of *A. coahuilense* has two chambers, the large or empty chamber (hilum) and a small chamber or embryo chamber, which is the seed itself. The largest amount of spongy tissue was found in the large chamber (1). A significant association among type of structure and buoyancy capacity was determined ($\chi^2 = 31.59$; D.F. = 2, $P = 0.001$). Most of the empty chambers (84%) and complete seeds (88%) floated, while most chambers of the embryo (80%) collapsed (table 1). The Kruskal-Wallis test showed a highly significant difference ($H_t = 16.00$, D.F. = 2, $P = 0.0048$) among floatability of the empty chamber, whole seed and embryo chamber (table 2). Multiple median comparison tests showed that the embryo chamber has a lower capacity to float than the empty chamber and complete seed (figure 1, 2 and table 2). *A. coahuilense* seeds displayed an average density of (0.213 g/cm^3), mass of 0.0143 g and volume of 0.0672 mm^3 .

Table 1. Frequency and percent for floatability and sinking of *A. coahuilense* seeds are displayed. Small chamber seeds (SCS), large chamber seeds (LCS) and complete seeds (CS) were considered. Complete seeds (CS) showed the highest floatability and the lowest sinking proportion.

	SCS	LCS	CS
A float seeds	20% (5)	84% (21)	88% (22)
Sunk seeds	80% (20)	16% (4)	12% (3)

Table 2. Test for Floatability of *A. coahuilense* seeds are displayed. Empty chamber, Embryo chamber and Complete Seeds were considered. Complete seeds showed the highest floatability and the embryo chamber the highest sinking proportion.

Data			Floatability
Factor codes			Groups
Test statistic			9.9950
Corrected for ties Ht			10.6613
Degrees of Freedom (DF)			2
Significance level			P = 0.0048
Posthoc test analysis		n	Average Rank
Factor			Different (P<0.05) from factor nr
(1) Complete seed	5	12.70	(2)(3)
(2) Embryo chamber	5	3.80	(1)(3)
(3) Empty chamber	5	7.50	(1)(2)
Sample size		15 (five repetition for treatment)	

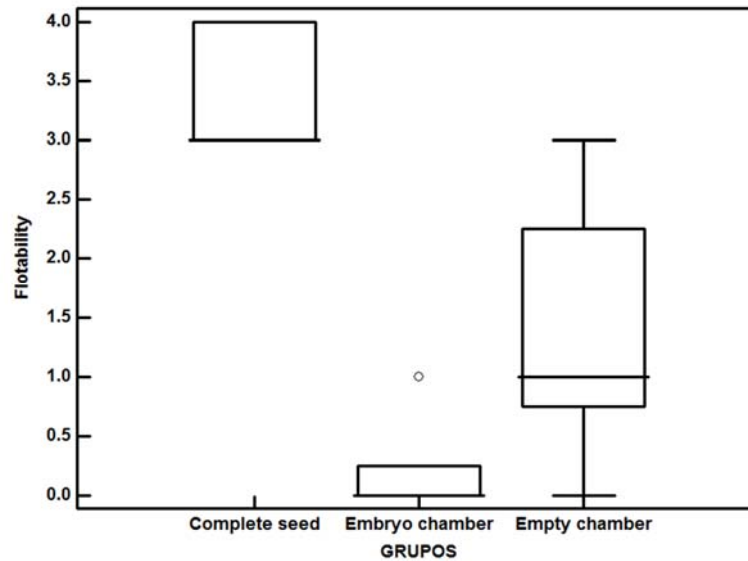


Fig. 1. Statistical median dispersion values for buoyancy (understood as the number of floating seeds) of the different seed structures evaluated.

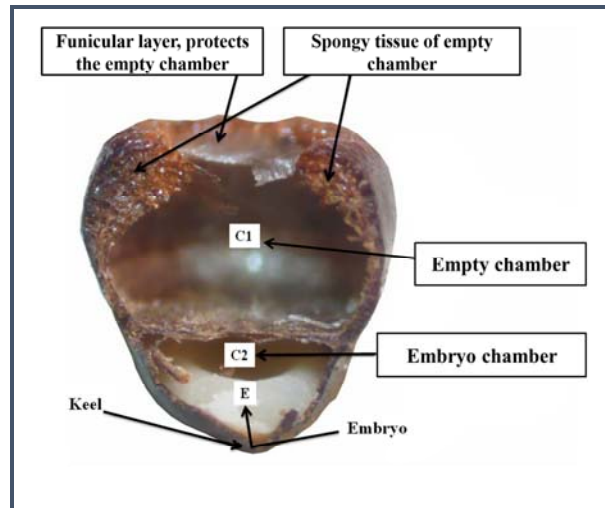


Fig. 2. Freehand seed cutting, where the double chamber of the *A. coahuilense* seed is observed. The upper part shows the empty chamber (C1) surrounded by spongy tissue, while in the lower part of the seed is the embryo chamber (C2), the whitish structure is the endosperm and in the lower part of the endosperm is the region called keel, where the embryo (E) is located forming part of the embryo chamber (C2). Photo Jaime Sánchez.

DISCUSSION

It has previously been denoted that the seeds from many plants are adapted to float because they contain spongy tissue that include large compartments which harbor air (Raven and Evert 1999; Hendry and Grime 1993). These characteristics fall in agreement with the spongy tissue features from the seminal cover found in the empty chamber (hilum) from *A. coahuilense* seed and the association between the type of structure and the buoyancy capacity. In the present study it is suggested that the presence of both spongy tissue and empty chamber could perform as a buoy and their conjointment is what gives the seed the ability to float and consequently the hydrochoric capacity. Bregman's work (1988) confirms that the seeds with superior buoyancy abilities are those with a considerably large hilum and a little or absent funicular tissue, a very thin covering and a small embryo as in the seeds from the *Astrophytum* genus. Barthlott and Hunt (2000) support this mentioning that *Astrophytum* seeds are navicular and specially adapted for hydrochory, but can also be dispersed by the wind (anemochoric). Sánchez-Salas et al. (2014) also found that 70% of *A. capricorne* seeds showed buoyancy for more than 30 days and that most of the seedlings that developed on the water during the evaluation, also floated. The probable adaptation for dispersion by water currents in *A. coahuilense* seeds could be considered to explain the geographical range of this plant, which in turn borders the margins of the great Irritila paleolake (Czaja et al. 2014). Taking into account that this area was covered by extensive paleolakes and paleorivers in the past (Van Devender 1977, Van Devender y Burgess, 1985, Metcalfe 2006, Marín y Torres-Ruata (1990) that could have served as a mechanism of dispersion and probably as an agent for deposition of seeds on the limestone hills with rosette vegetation, characteristics where its main nurse *Agave lecheguilla* inhabits (Muro-Pérez et al. 2009). It is very important, because for Bregman (1988), the distribution pattern is precisely one of the plant characteristics that must be taken into account to support seed hydrochory. On the other hand, experimental designs that integrate water flows where the seeds are deposited are needed, and verify its dispersion. In the future, we also need to compare the buoyancy and geographical distribution of this seed with other species of the desert to have more evidence that a large percentage of buoyancy of seeds may be associated with certain structures and wide geographical distribution. Sánchez-Salas et al. (2014) analyzed seed buoyancy in *A. capricorne* and *A. ornatum*, which belong to the same genus and have a very similar to *A. coahuilense*

seed. Hydrochory was demonstrated through buoyancy tests and morphological analysis, it was concluded that both seeds have adaptations for hydro-dispersion. In this work the hydrochorous evidences were focused on the buoyancy analysis and the density trial of *A. coahuilense* seed (0.213 g/cm^3) in contrast to water density (1 g/cm^3), on the basis of Archimedes' theory, in which a body can float if its density is inferior than the volume of water it displaces. Considering the morphological characteristics such as the spongy tissue found in the empty chamber and shape of an empty buoy itself, density as a concept closely related to the buoyancy of the seed in water, that the navicular shape (of a ship or boat) is also associated with seed buoyancy (Bregman 1988) and seed buoyancy being closely linked to the hydrochory (Farji-Brener et al. 2005).

CONCLUSIONS

It can be concluded that solid evidence was found suggesting that the seed of the threatened cacti *A. coahuilense* is hydrochorous, due to having seminal structures as an empty chamber (shaped like a buoy) formed of spongy tissue, which provides lower density than water.

ACKNOWLEDGEMENTS

To the chief of the postgraduate department of the Faculty of Biological Sciences of the Universidad Juarez of the State of Durango, for the facilities provided for the realization of this research and the editors who with their observations enriched the work and finally to doctor Cristian Adrian Martínez Adriano for his comments on this manuscript.

LITERATURA CITADA

- Arredondo-Gómez, A., & Camacho-Morfin, F. (1995). Germinación de *Astrophytum myriostigma* (Lemaire) en relación con la procedencia de las semillas y la temperatura de incubación. *Cactáceas Y Suculentas Mexicanas*, 40(2), 34–38.
- Augspurger, C. ., & Hogan, K. . (1983). Wind dispersal of fruits with variable seed number in a tropical tree (*Lonchocarpus pentaphyllus*: Leguminosae). *American Journal of Botany*, 70(7), 1031–1037. Retrieved from <http://www.jstor.org/stable/2442812>
- Barthlott W, H. D. (2000). *Seed-Diversity in the Cactaceae subfam. Cactoideae. Succulent Plant Research*. England.
- Bregman, R. (1988). Forms of seed dispersal in Cactaceae. *Acta Botanica Neerlandica*, 37(3), 395–402. <https://doi.org/10.1111/j.1438-8677.1988.tb02148.x>
- Czaja, A., Palacios-Fest, M. R., Estrada-Rodríguez, J. L., Romero Méndez, U., & Alba Ávila, J. A. (2014). Inland dunes fauna and flora from Paleolake Irritila in the Comarca Lagunera, Coahuila, northern Mexico. *Boletín de La Sociedad Geológica Mexicana*, 66(3), 541–551. Retrieved from <http://ojs-igl.unam.mx/index.php/bsgm/article/viewFile/508/307>
- Farji Berner, A. G., Durán, S., Valerio, A., Herbas, E., Castañeda, M., Ochoa, J., & Romo, M. (2005). La semilla de *Campsiandra angustifolia* (Fabaceae: Caesalpinioideae) como un reflejo de las presiones selectivas sobre su dispersión y establecimiento. *Revista de Biología Tropical*, 53(1–2), 63–71. Retrieved from http://www.scielo.sa.cr/scielo.php?pid=S0034-77442005000100007&script=sci_arttext
- Gold, K., León-Lobos, P., Way, M., De, S., De, P., Silvestres, P., ... Restauración, E. (2004). *Manual de recolección de semillas de plantas silvestres* (Instituto). La Serena, Chile. Retrieved from http://www.inia.cl/recursosgeneticos/descargas/manual_de_semillas.pdf
- Hendry, G. A., & Grime, J. . (1993). *Methods in comparative plant ecology: a laboratory manual*. (G. . Hendry & J. . Grime, Eds.). London: Springer Netherlands. Retrieved

Recibido:
28/julio/2017

Aceptado:
14/junio/2018

- from <https://books.google.com.mx/books?hl=es&lr=&id=lpE8cUqrVWIC&oi=fnd&pg=PR11&dq=Methods+in+comparative+plant+ecology:+a+laboratory+manual&ots=0YWYyOJhIVS&sig=inL11OwE24w0b1W9KdUCBBglFr>
- IUCN red list of threatened species, version 2011.1. (2011). *IUCN*. Retrieved from https://scholar.google.com.mx/scholar?hl=es&as_sdt=0%2C5&q=IUCN+Red+List+of+Threatened+Species.+Version+2011.1&btnG=
- López Becerra, J. L., Romero Méndez, U., Berumen Padilla, S., & Martínez García, E. (2010). ANÁLISIS MORFOLÓGICO DE LA SEMILLA DE *Astrophytum myriostigma* Lem. *Boletín Nakari*, 21(3), 39–45.
- Marín, S., & Torres-Ruata C. (1990). Hidrogeología” IV. 6. 3. Atlas Nacional de México. Retrieved from <http://www.conabio.gob.mx/informacion/gis/>
- Metcalf, S. E. (2006). Late Quaternary environments of the northern deserts and central transvolcanic belt of Mexico. *Annals of the Missouri Botanical Garden*, 93(2), 258–273. Retrieved from http://desertfishes.org/cuatroc/literature/pdf/Metcalf_2006_Late_Quaternary_environments.pdf
- Mohazzabi, P. (2017). Archimedes’ Principle Revisited. *Journal of Applied Mathematics and Physics*, 5, 836–843. <https://doi.org/10.4236/jamp.2017.54073>
- Moreno Casasola, P. (2009). *Vida y obra de granos y semillas* (2nd ed.). España: Fondo de Cultura Económica de España. Retrieved from <https://latam.casadellibro.com/libro-vida-y-obra-de-granos-y-semillas-2-ed/9789681669522/1251475>
- Muro Pérez, G., Romero Méndez, U., Flores Rivas, J. D., & Sánchez Salas, J. (2009). Algunos aspectos sobre el nodrizaje en *Astrophytum myriostigma* Lem.(1839)(Cactae: Cactaceae), en la Sierra El Sarnoso, Durango, México. *Boletín Nakari*, 20(3), 43–48. Retrieved from <http://ipicyt.repositorioinstitucional.mx/jspui/handle/1010/1126>
- Niembro Roca, A. (1988). *Semillas de árboles y arbustos: ontogenia y estructura*. (N. Editores, Ed.), *Limusa*. Aguascalientes: Limusa México. Retrieved from <http://www.sidalc.net/cgi-bin/wxis.exe/?IsisScript=DOCFOR.xis&method=post&formato=2&cantidad=1&expresion=mfn=010392>
- Querelle, & Cia Ltda. (2015). Densidad y Volumen. Retrieved March 7, 2018, from http://www.profesorenlinea.com.mx/fisica/Densidad_y_Volumen.htm
- Raven, P. H., Ever, R. F., & Eichhorn, S. E. (1999). *Biology of plants* (6th ed.). New York: New York: W.H. Freeman: Worth Publishers.
- Sánchez-Salas, J., Jurado, E., Flores, J., Estrada-Castillón, E., & Muro-Pérez, G. (2012). Desert species adapted for dispersal and germination during floods: Experimental evidence in two *Astrophytum* species (Cactaceae). *Elsevier Flora - Morphology, Distribution, Functional Ecology of Plants*, 207(10), 707–71. Retrieved from <https://www.sciencedirect.com/science/article/pii/S0367253012001260>
- Sánchez-Salas, J., Jurado, E., Flores, J., Muro-Pérez, G., & Estrada-Castillón, E. (2013). Adaptaciones inusuales en semillas y plántulas del desierto: Mecanismos para su germinación & dispersión. *Boletín de La Sociedad Latinoamericana Y Del Caribe de Cactáceas Y Otras Suculentas*, 10(1), 19–23. Retrieved from http://www.fcbujed.mx/posgrado/mcbe/productos/jss/articulos/adaptaciones_inusuales.pdf
- Sánchez, J., Arias, S., Muro, G., García-Aranda, M., & García-Morales, L. J. (2014). Diversidad Cactoflorística de la Zona Árida y Semiárida de Durango, México. *Interciencia*, 39(11), 794–802. Retrieved from <http://www.redalyc.org/pdf/339/33932572006.pdf>
- Van Den Broek, T., Van Diggelen, R., & Bobbink, R. (2005). Variation in seed buoyancy of species in wetland ecosystems with different flooding dynamics. *Journal of Vegetation Science*, 16(5), 579–586. Retrieved from <http://www.bioone.org/doi/full/10.1658/1100-9233%282005%2916%5B579%3AVISBOS>
- Van Devender, T. R. (1977). Holocene Woodlands in the Southwestern Deserts. *Science*, 198(4313), 189–192.
- Van Devender, T. R., & Burgess, T. L. (1985). Late Pleistocene Woodlands in the Bolson de Mapimi: A Refugium for the Chihuahuan Desert Biota? *Quaternary Research*, 24(3), 346–353. [https://doi.org/10.1016/0033-5894\(85\)90056-0](https://doi.org/10.1016/0033-5894(85)90056-0)